

Bexley Borough Neighbourhood Watch Association



Newsletter July-2012

- James Brokenshire (MP-for Old Bexley & Sidcup) Chairman, Communications & Newsletter Editor--Dana Wiffen
Vice Chairman -Jo Tanner, Treasurer-Sophie Kingston, Secretary-Claire Tack

Telephone Office 0208 284 5537 or Email us: bexwatch-office@btconnect.com WEBSITE www.bexleywatch.org.uk



We had a successful AGM-on Monday 11th June with a New Chairman and Vice Chair being elected as well as Treasurer and 2 new members to the committee see below for further info...

PHOTOS above and below-from left to right Secretary Claire Tack, outgoing Chairman Ray Hudson, Patron James Brokenshire, New Chairman Dana Wiffen & Chief Inspector Ian Broadbridge



We had a good turnout for this years AGM and we thank all those members whom attended. Ray Hudson has stepped down as Chairman

but will remain a committee member, Dana Wiffen has stepped up from Vice Chairman to Chairman and Jo Tanner has been elected Vice Chair, Sophie Kingston being elected Treasurer and our hard working Claire Tack staying as Secretary. Both Dave Dawson and Kevin Wilkinson stepped down from our committee, but we have Peter Embleton and Comfort Omoko coming on board.

Ray Darsey, Tony Alcorn, Pam & Stewart Bartle, Grant Murrell and Violaine Therond are remaining as committee members we are grateful for their continued support.



This photo shows long serving committee members Grant Murrell (left) Ray Darsey (centre) & Tony Alcorn (right)

BRIEF MESSAGE-from new Chairman-Both Jo & I and your committee want to increase our profile, make us more efficient and work to increase our membership

towards 50% coverage in the borough. Your support is essential as we move forward. You will note from this newsletter that we are already working towards this.

DIAMOND JUBILEE STREET PARTIES A SUCCESS despite awful weather



The above photo shows one of many street parties in NW areas celebrating the Diamond Jubilee in the Borough.



MEETINGS TO MERGE???

Discussions with the police have taking place with a view to amalgamating ward coordinators meetings with ward panel meetings. This will be tried on a trial basis and will hopefully be successful.

[NOMINATED NEIGHBOUR FORM NOW AVAILABLE ON OUR WEBSITE](#)

[Please consider our environment - do not print this email unless absolutely necessary.](#)



Bexley Borough Neighbourhood Watch Association



Newsletter July-2012

- James Brokenshire (MP-for Old Bexley & Sidcup) Chairman, Communications & Newsletter Editor--Dana Wiffen
Vice Chairman -Jo Tanner, Treasurer-Sophie Kingston, Secretary-Claire Tack

Telephone Office 0208 284 5537 or Email us: bexwatch-office@btconnect.com WEBSITE www.bexleywatch.org.uk

NW-WEEK the 16th-24th June Was celebrated with a recruitment stall in the Broadway shopping centre on Saturday June 16th. We had a number of people showing interest in becoming coordinators and many more signing up.



Photo shows Grant, John, Jo and Violiane encouraging new coordinators with the help of a local Police Team

Diary Sheets-Are they needed? The processing of these sheets is slow, it is far more efficient to report an incident either on 101 or 999, Once you have an incident number either email us or drop us a note so we have a record of what has happened and can follow it up with The Police if required. You should also copy

in your SNT. We are therefore considering scapping these sheets and may introduce an "incident report" card as replacement.

THE DANSON SHOW

We were invited by our sponsors Cory Riverside to share their tent, we had a successful day on Saturday, with many visitors including The new Borough Commander Chief Superintendent Victor Olisa and our Patron MP-James Brokenshire. The photo below shows new Chairman Dana Wiffen with Sgt Stephen Bateman either side of our new recruitment banner



The **NEW NW/SNT GUIDE BOOKLET**- This is now finalised and ready to go to print.



Richard Mann took over as Chair of Bexley CPEG at their AGM on 28th May 2012. Joyce Sutherland has stood down after three years but will remain Vice Chairman.

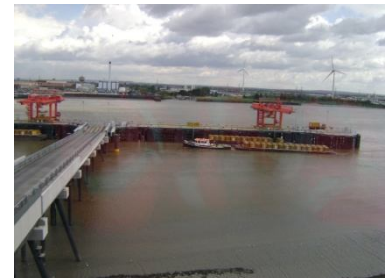
CORY RIVERSIDE PLANT TOUR FOR NW MEMBERS- photos below



The 1st group start their tour



The after tour discussions room



The docking area for delivery barges-
More info on this trip will be in next newsletter

